

ENGINEER TO ORDER

SPECIAL PROJECT INFORMATION SHEET



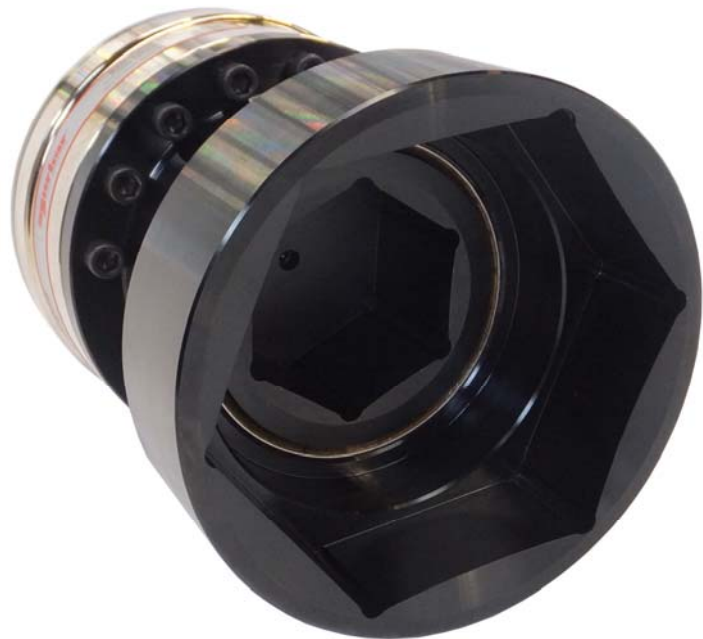
Project Description	HT9/25 with special reaction & drive socket		
Date created	30 November 2015	Project Number	Q3559

INTRODUCTION & APPLICATION

Commercial hot water system valve requires rotating 90° at up to 8,000 N.m torque.

SOLUTION

Special HT9 with 25:1 torque multiplication, integral female hexagon drive socket and female hexagon reaction to suit DN400 valve.



TECHNICAL SPECIFICATION / DATA HIGHLIGHTS

Professional model 400 ¾" square drive torque wrench set to approx. 320 N.m input torque, will provide the required 800 N.m at the HT9 output / valve input.

Fits 80.0mm A/F hexagon valve rotating input & 150mm A/F hexagon fixed on the valve body (reaction).

Drive socket is supported in a bearing bush.

Anti-wind-up ratchet is included.